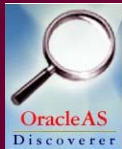


Discoverer Web for AQS



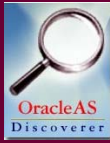
Bonnie Johnson



Goals for this class

- ◇ Introducing Discoverer Plus
- ◇ Finding the data you need
- ◇ Designing your workbooks
- ◇ Sharing your results
- ◇ Helping yourself





What is Discoverer?

- ❖ A business intelligence tool for ad hoc queries, reporting, analysis, and Web publishing from Oracle Corporation
- ❖ A retrieval only tool that works on a relational database whether it's designed for online transaction processing (OLAP) or as a data warehouse



It's the ad hoc query tool for AQS!

File Edit Sheet Tools Graph Help

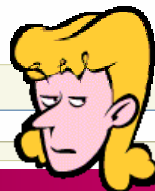
Sites in Texas (State Code = '48') as of 31-MAY-06

	State/County/Site	Street Address	City Name	ZIP Code
721	482270002	3RD & MAIN ST., HOWARD CO. COURTHOUSE	Big Spring	NULL
722	482010040	2925 JEANNETTA AT CLARKCREST	Houston	NULL
723	484300008	100 EAGLE	Fort Worth	NULL
724	480430001	607 WEST HOLLAND	Alpine	NULL
725	483030023	LUBBOCK STATE SCHOOL, NO. UNIVERSITY AVE	Lubbock	NULL
726	483030021	ZENITH FIRE STATION	Lubbock	NULL
727	481410008	4120 RIO BRAVO KOGER BLDG.	El Paso	NULL
728	482011008	1114 PARKSIDE & STRAWBERRY ST.	Pasadena	NULL
729	481410080	EL PASO	El Paso	NULL
730	481810001	GRAYSON CO. HEALTH DEPT, WEST GANDY	Denison	NULL
731	480290023	HILLS & DALES WATER CO., WHITE FAWN RD.	San Antonio	NULL
732	482030001	MARSHALL	Marshall	NULL
733	484690001	WATER TREATMENT PLANT, AIRLINE	Victoria	NULL
734	482010040	KRESS & LYONS	Houston	NULL
735	482010017	12550 CLINTON AT FEDERAL	Houston	NULL
736		PORT SEWAGE TREATMENT FACILITY	Not in a city	NULL

Page 31 of 31

Sheet 1

24 Rows per Page



How many active criteria monitors
are there in Region 6 states?

Active Criteria Monitors in Region 6
31-MAY-06 05.25.28 PM

	State	Count of Monitors				
		AR	LA	NM	OK	TX
Parameter Desc						
Carbon Monoxide		1	5	14	7	29
Lead (Tsp)			38	10	5	14
Nitrogen Dioxide		2	15	12	6	58
Ozone		10	31	26	28	89
Pm10 Total 0-10um Stp		4	7	48	26	45
Pm2.5 - Local Conditions		23	71	29	29	87
Sulfur Dioxide		4	9	13	12	30

Discoverer

Microsoft Excel - t2 - Active Criteria Mons in Region 6.xls

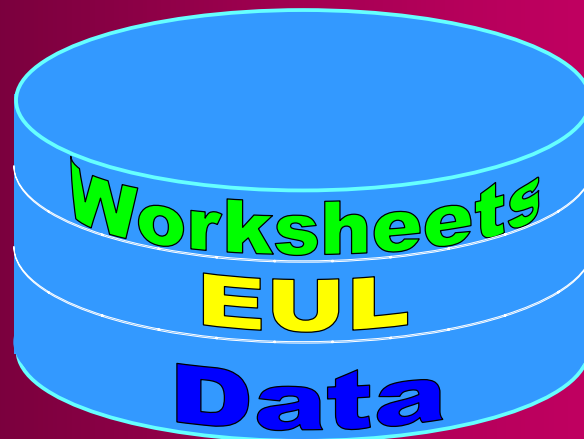
	A	B	C	D	E	F	G
1	Active Criteria Monitors in Region 6	31-MAY-06	05.27.22	PM			
2							
3							
4							
5	Parameter Desc						
6	Carbon Monoxide		1	5	14	7	29
7	Lead (Tsp)			38	10	5	14
8	Nitrogen Dioxide		2	15	12	6	58
9	Ozone		10	31	26	28	89
10	Pm10 Total 0-10um Stp		4	7	48	26	45
11	Pm2.5 - Local Conditions		23	71	29	29	87
12	Sulfur Dioxide		4	9	13	12	30

Exported to Excel



How does this work?

Database



End User Layer



Key Terminology

Interface to database = End User Layer
Grouping of Tables = Business Area
Group of worksheets = Workbook

Tables	→	Folders
Columns	→	Items
Rows	→	Records
Queries	→	Worksheets



What you need

- ◇ AQS userid and password
- ◇ Java-enabled Web browser
- ◇ Java Virtual Machine (JVM) such as Oracle JInitiator
- ◇ Latest security certificate (pokeCertdb.bat)
- ◇ url:
<https://iasint.rtpnc.epa.gov/discoverer/plus>



Starting Discoverer Plus

<https://iasint.rtpnc.epa.gov/discoverer/plus>

Oracle Application Server

Discoverer Plus

Help

Connect to Discoverer Plus

To connect to OracleAS Discoverer, click the corresponding Connection in the table below. If the connection you are looking for isn't in the list, click Create Connection.

Create Connection

Details	Connection	Description	Update	Delete
(No connections found.)				

Help



Create a Connection

Oracle Application Server

Discoverer Plus

Help

Create Connection: Connection Details

Enter a connection name that is easy to remember. Add a description for this connection, followed by the database account details.

Cancel Apply

Connection Name and Description

Connection Name: aqspod

Connection Description: EPA's Air Quality System

Locale: Locale set in user's browser

Database Account Details

User Name: bos

Password:

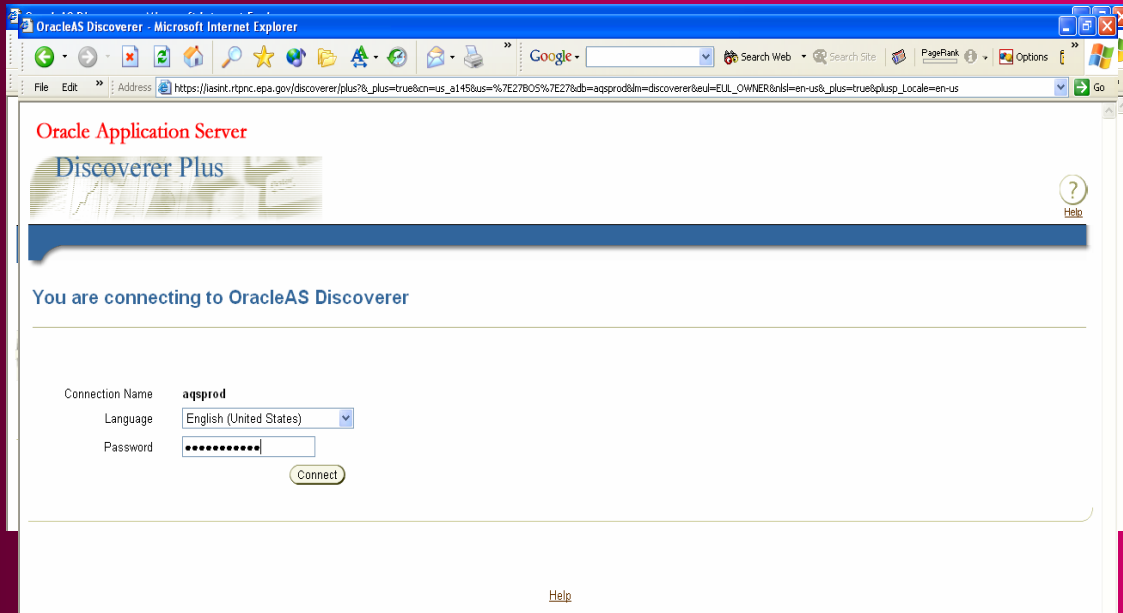
Database: aqspod

Cancel Apply

Help



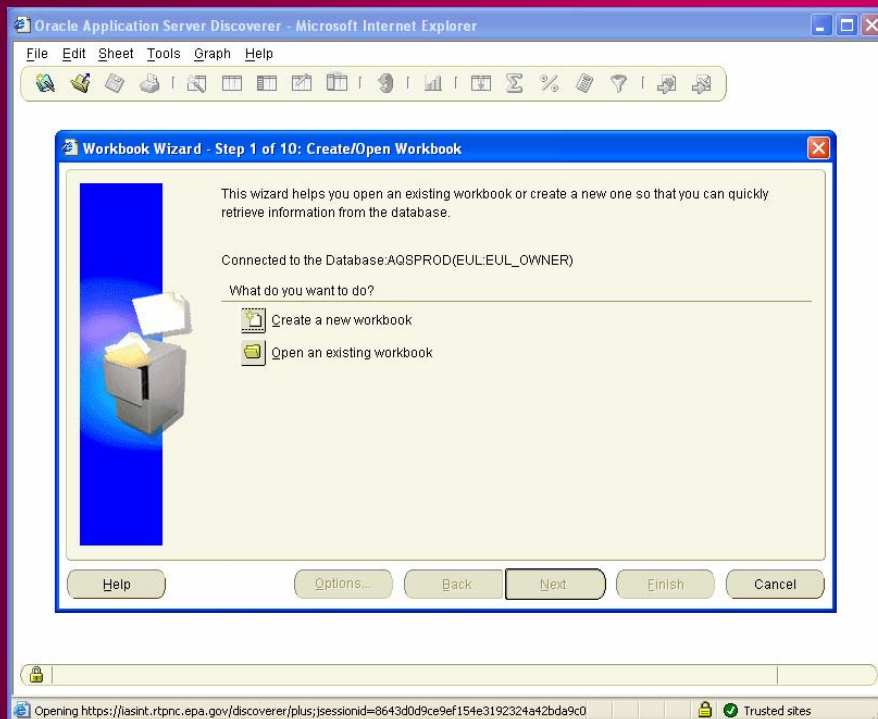
Connection Created



Use this
connection

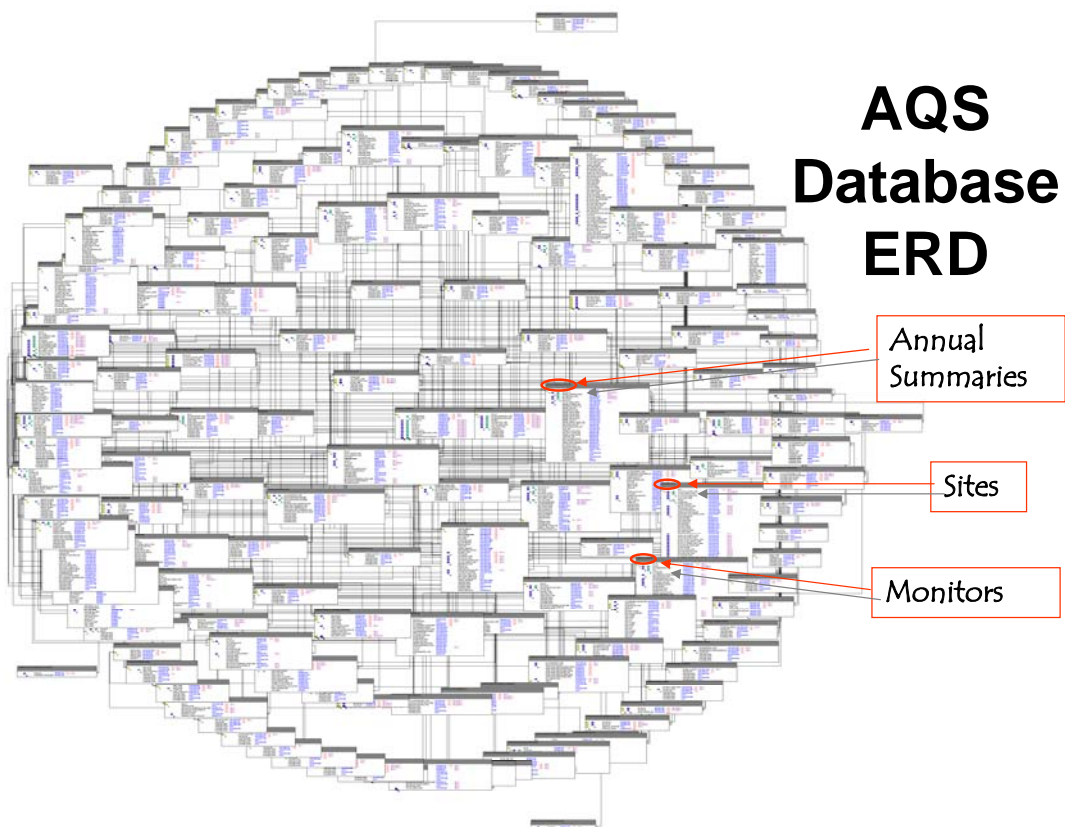


Successful connection



What do you need to know about before you try to Create or Open a Workbook

Structure of the database



Your Business Areas

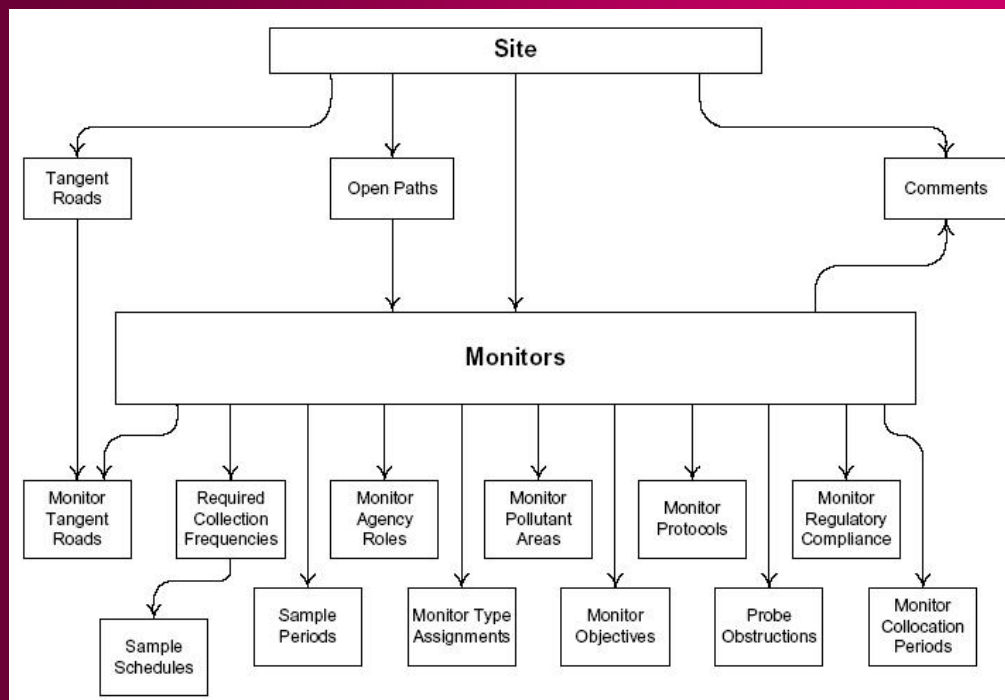
AQS basic

AQSProd 9i

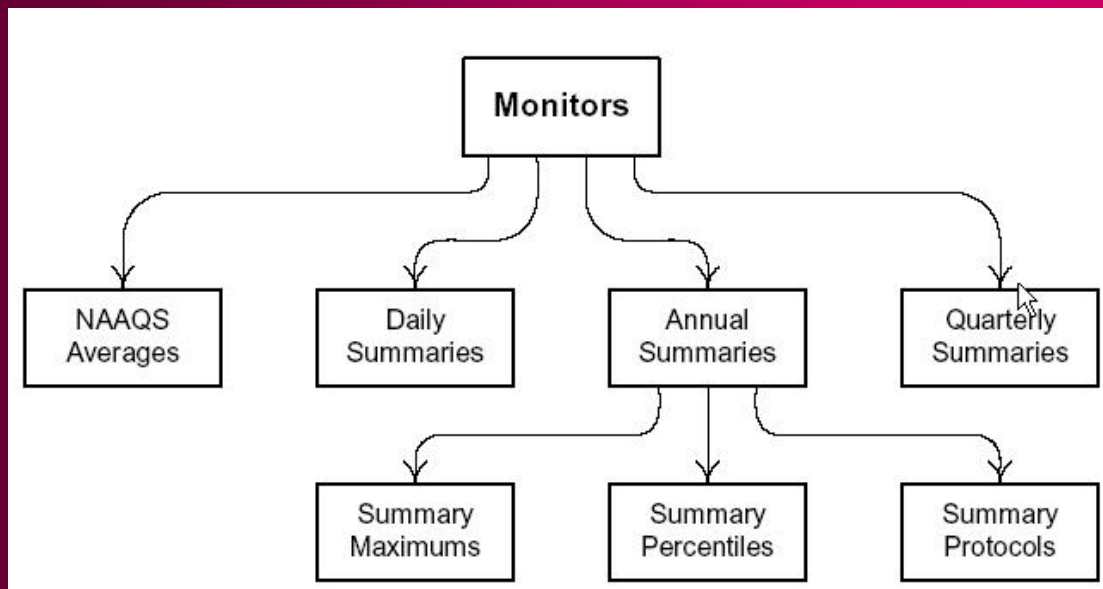
- ◇ Folders are composed primarily of views (i.e., combinations of tables) in the aqsprod database as described in the Data Dictionary
- ◇ Reference tables (e.g., States, Parameters, Units)
- ◇ Raw data and other additional folders in AQSProd 9i



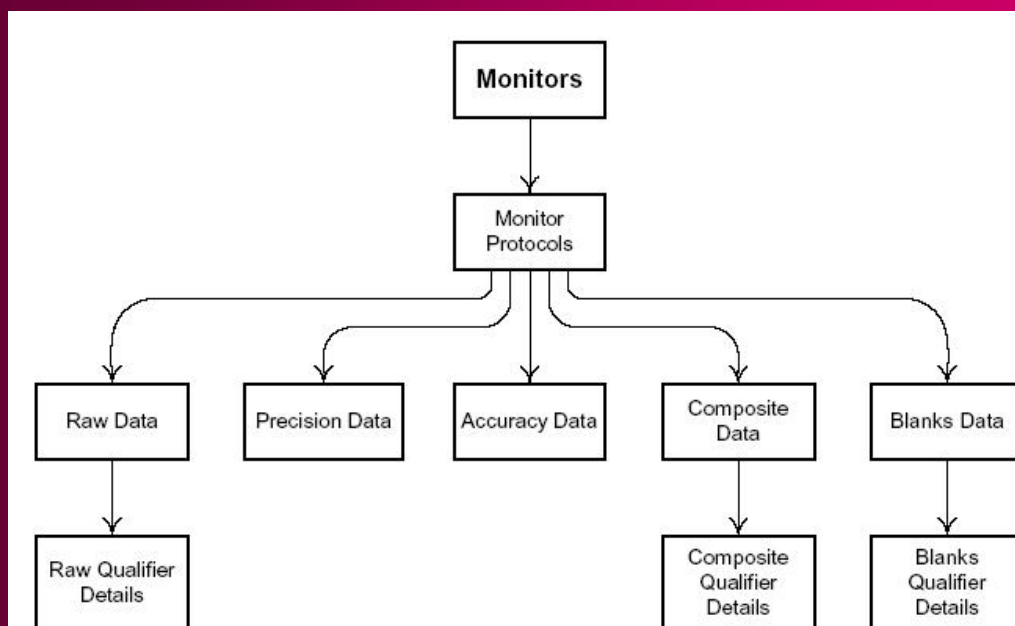
Data Model for AQS



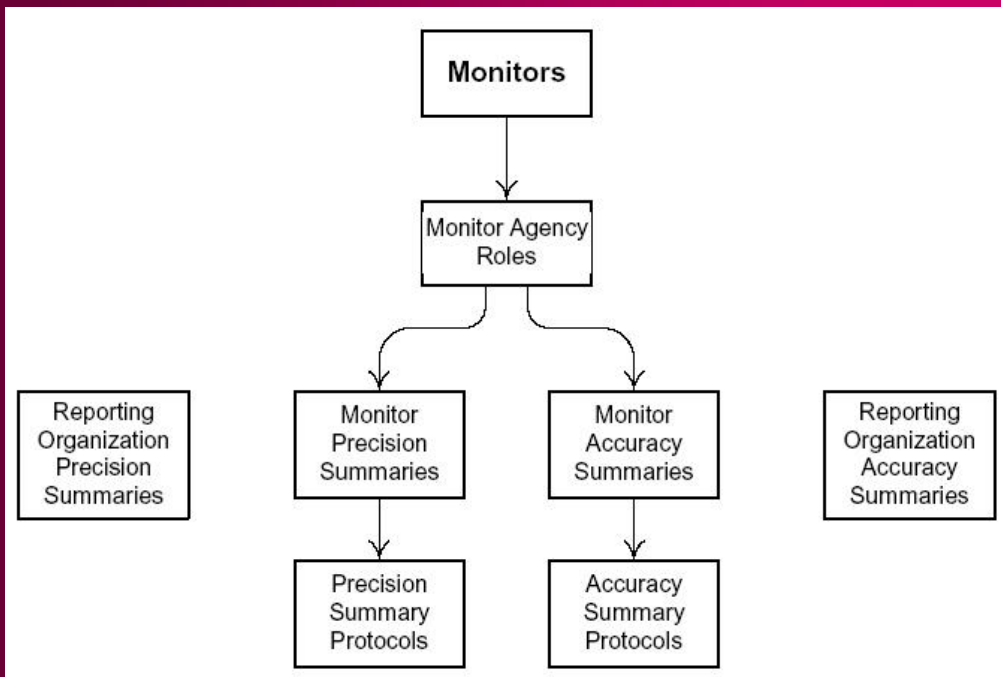
Data Model for AQS, cont'd



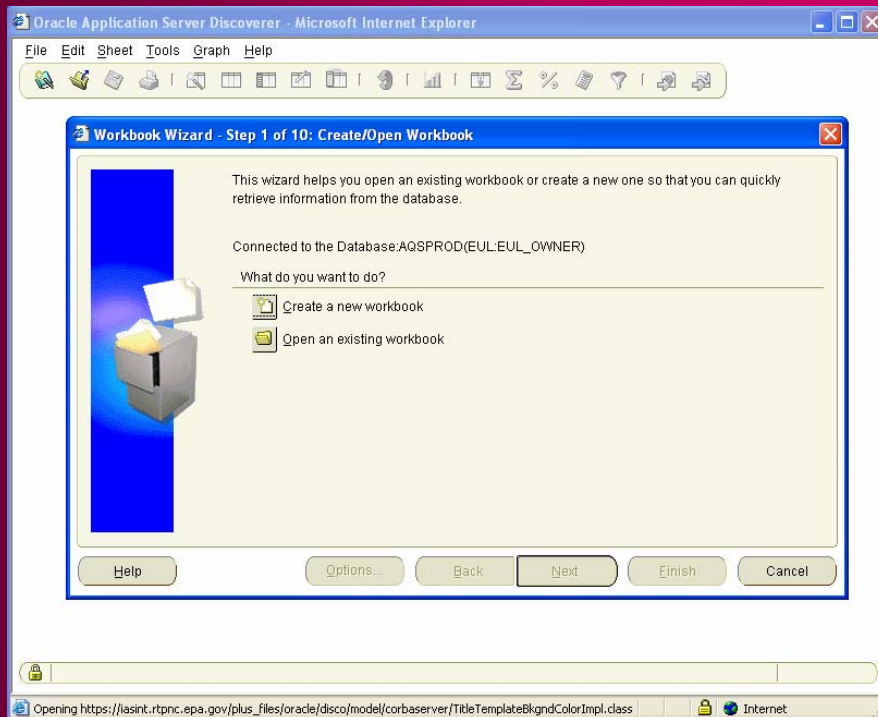
Data Model for AQS, cont'd



Data Model for AQS, cont'd

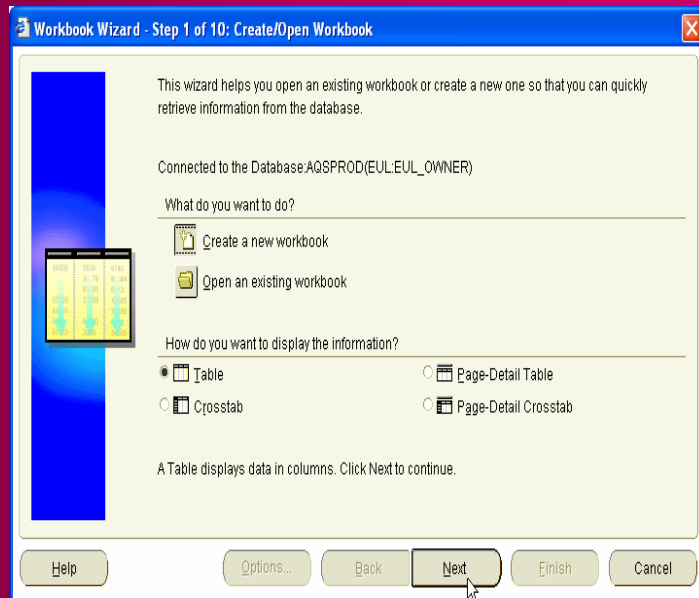


Create/Open a Workbook



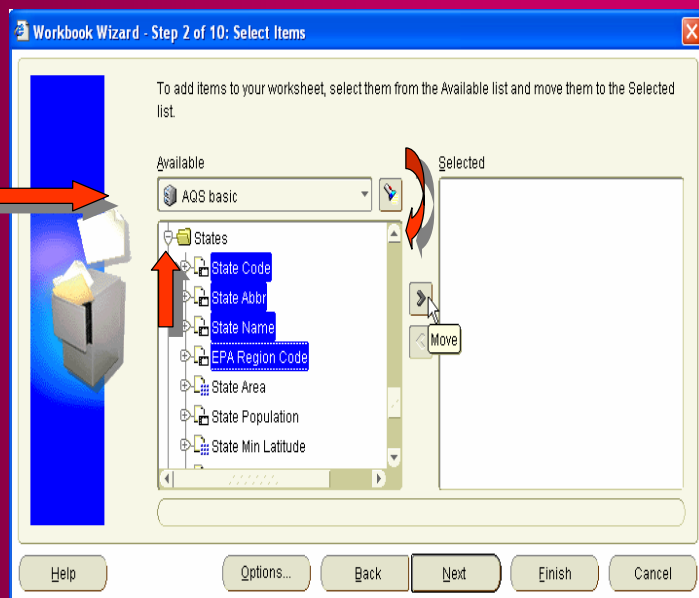
Creating a New Workbook

- ◇ Use the Workbook Wizard
- ◇ Start with a simple goal in mind – e.g., Find the states in your region

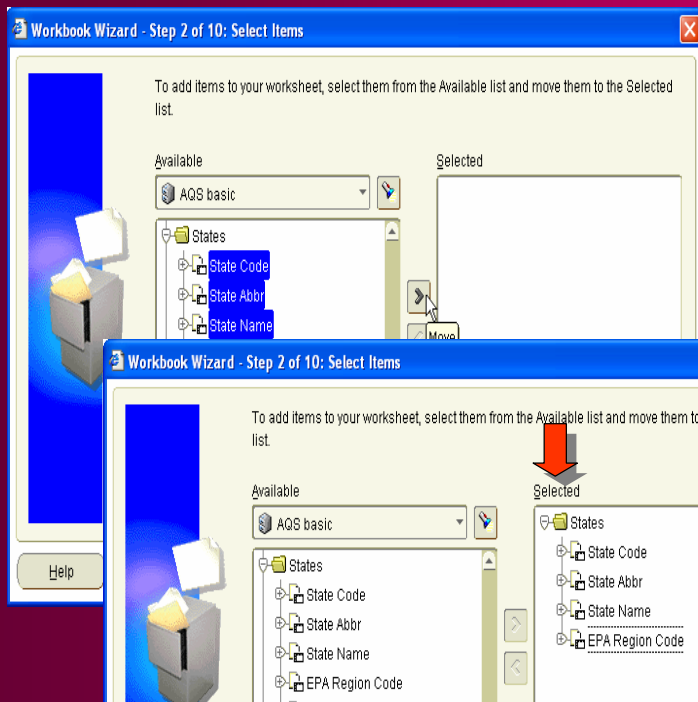


Selecting Items

- ◇ AQS basic is the simplest Business Area
- ◇ Scroll through list of folders
- ◇ Expand a folder to see its items



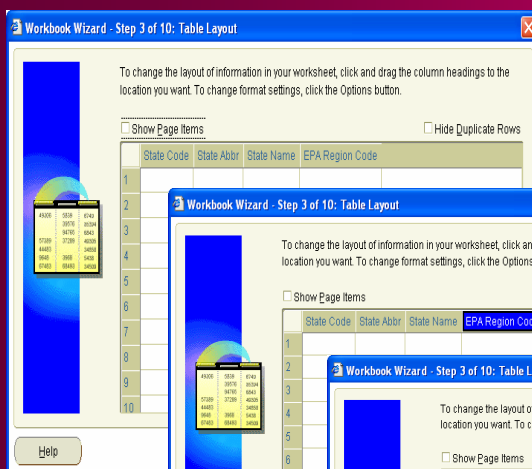
Selecting Items, cont'd



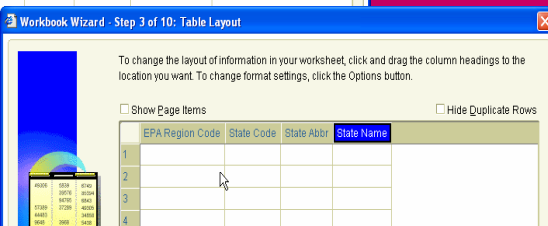
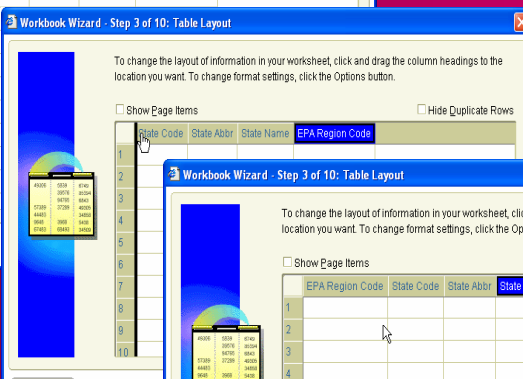
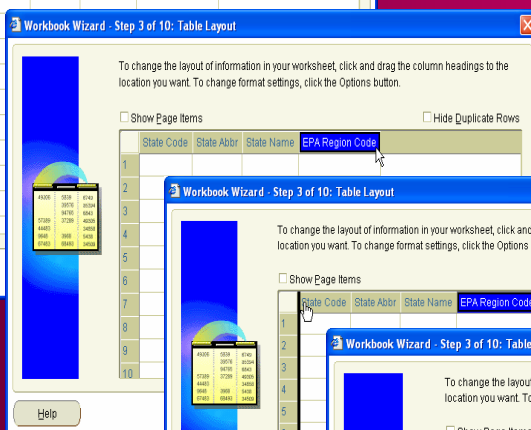
- Highlight items and move them to the Selected side



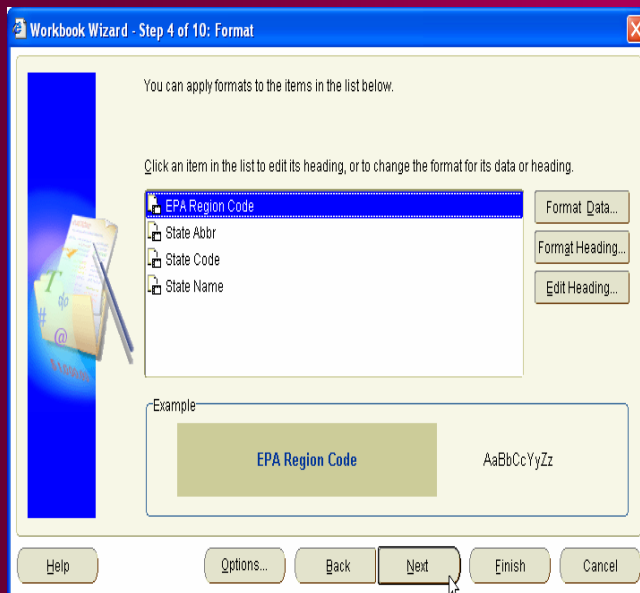
Table Layout



- Click and drag headings to desired order



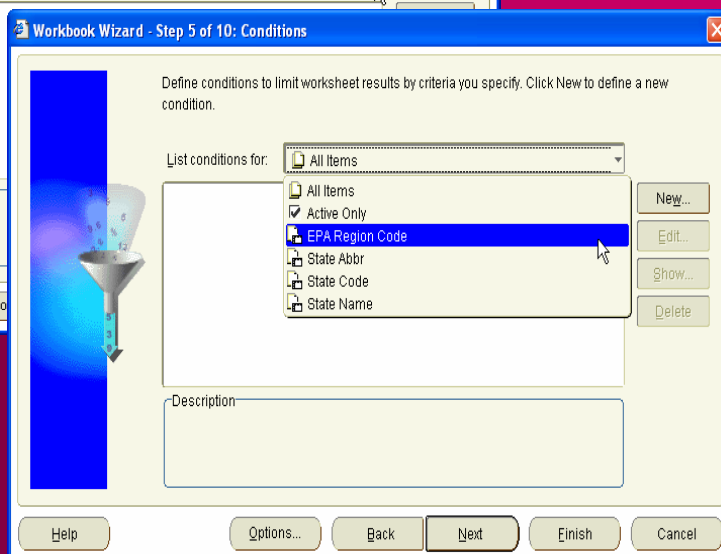
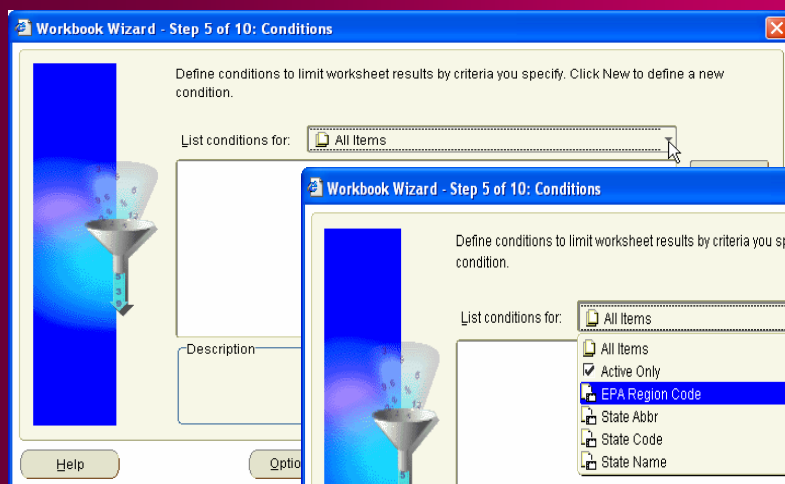
Formatting



- ❖ Format data and headings for items
- ❖ Edit heading for an item



Conditions



Conditions, cont'd

New Condition

What would you like to name your condition?
 ☒ Generate name automatically

What description would you like to give your condition?

Formula
 Type text in single quotes or select a value from the drop-down list. Multiple values must be separated by commas.

Item	Condition	Values
:EPA Region Code	=	

☒ Case-sensitive

This condition is located in the workbook 'Workboo'

Help OK Cancel

Advanced >>

Create Calculation...
 Select Item...
 New Parameter...
 Select Multiple Values...
☒ 01
☐ 02
☐ 03
☐ 04

Formula
 Type text in single quotes or select a value from the drop-down list. Multiple values must be separated by commas.

Item	Condition	Values
:EPA Region Code	=	01

☒ Case-sensitive

Advanced >>



Sorts and Calculations

Workbook Wizard - Step 6 of 10: Sort

Click Add and then select a column to sort. Select the Group sort type to hide repeated cell values in a column. Check Hidden to hide a sorted column in the worksheet.

Column	Direction	Sort Type	Hidden
Sort by: State Abbr	Low to High	Normal	<input type="checkbox"/>

Add
Delete
Move Up
Move Down

Help Options... Back Next Finish Cancel

Workbook Wizard - Step 7 of 10: Calculations

Create calculations to add new information to your worksheet results. Click New to create a new calculation.

List calculations for: All Items

Click New to create a new calculation.

Description:

New...
Edit...
Delete

Help Options... Back Next Finish Cancel



Percentages and Totals

Workbook Wizard - Step 8 of 10: Percentages

You can create a percentage based on any data point to further analyze your data. Click New to create a new percentage.

List percentages for: All Items

Click New to create a new percentage.

Description

New... Edit... Delete

Help Options... Back Next Finish Cancel

Workbook Wizard - Step 9 of 10: Totals

Summarize your results using functions such as Sum, Average, Count, Minimum, Maximum, Standard Deviation and Variance. Click New to create a new total.

List totals for: All Items

Click New to create a new total.

Description

New... Edit... Delete

Help Options... Back Next Finish Cancel



Parameters and Results

Workbook Wizard - Step 10 of 10: Parameters

Create a parameter to prompt users to select or type a value. Click New to create a new parameter. To change the current value of a parameter, select Edit Parameter Values from the Sheet menu.

Available parameters:

Click New to create a new parameter.

Description

New... Edit... Delete Move Up Move Down

Help Options... Back Next Finish Cancel

File Edit Sheet Tools Graph Help

Double-click here to edit the title

	EPA Region Code	State Code	State Abbr	State Name
1	01	09	CT	Connecticut
2	01	25	MA	Massachusetts
3	01	23	ME	Maine
4	01	33	NH	New Hampshire
5	01	44	RI	Rhode Island
6	01	50	VT	Vermont

Page 1 of 1 100 Rows per Page

Sheet 1



Exercise 1

1. Launch a web browser
2. Go to <https://iasint.rtpnc.epa.gov/discoverer/plus>
3. Create your connection and Connect to aqspod
4. Create a new workbook using the AQS basic business area to show all states within your EPA region
5. Adjust the table layout so that **EPA Region** is in column 1, **State Abbreviation** in column 2, **State Name** in column 3, **State Code** in column 4
6. Center headings for all columns (Format)
7. Sort by **EPA Region**, then **State Abbreviation**. Change to a group sort on **EPA Region**.
8. Add a title



Exercise 1: Sample Results

Oracle Application Server Discoverer - [Workbook 3] - Microsoft Internet Explorer

File Edit Sheet Tools Graph Help

States in Epa Region 6

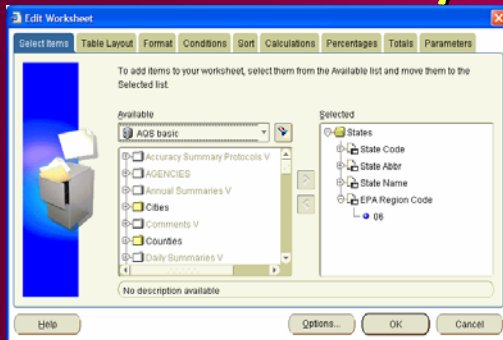
	EPA Region Code	State Abbr	State Name	State Code
1	06	AR	Arkansas	05
2		LA	Louisiana	22
3		NM	New Mexico	35
4		OK	Oklahoma	40
5		TX	Texas	48

Page 1 of 1 24 Rows per Page

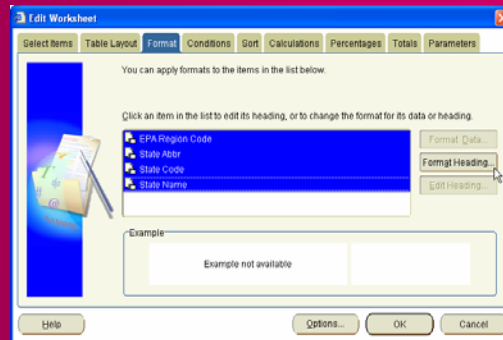
Sheet 1



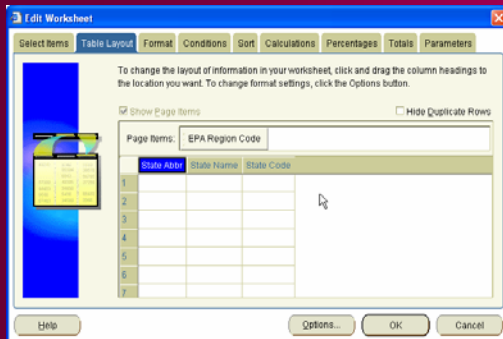
Did you notice?



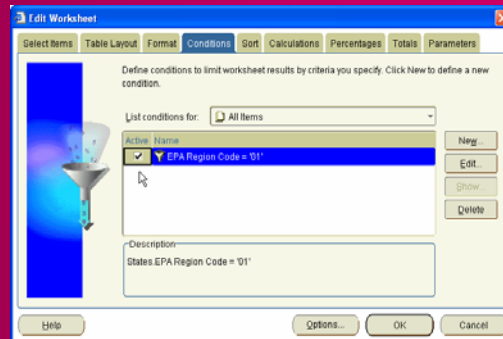
List of values (LOV)



Format multiple headings



Page Items



Conditions may be inactive



Exercise 2

No Cheating!

1. List all the parameters (pollutants) measured at site 06-001-0007
2. Modify #1 to include only parameters being sampled since 2004
3. Modify #1 to show sampling end dates



Exercise 2: Results

All parameters at site

	State Code	County Code	Site ID	Parm Code
1	06	001	0007	42101
2	06	001	0007	42601
3	06	001	0007	42602
4	06	001	0007	43101
5	06	001	0007	43102
6	06	001	0007	43201
7	06	001	0007	44201
8	06	001	0007	68101
9	06	001	0007	68102
10	06	001	0007	68103
11	06	001	0007	68104
12	06	001	0007	68105
13	06	001	0007	68106
14	06	001	0007	68107
15	06	001	0007	68108
16	06	001	0007	68109
17	06	001	0007	81102
18	06	001	0007	81102
19	06	001	0007	82203
20	06	001	0007	82301
21	06	001	0007	82306
22	06	001	0007	82403
23	06	001	0007	85101
24	06	001	0007	88101

All parms since 2004

	State Code	County Code	Site ID	Parm Code
1	06	001	0007	42101
2	06	001	0007	42601
3	06	001	0007	42602
4	06	001	0007	43101
5	06	001	0007	43102
6	06	001	0007	43201
7	06	001	0007	44201
8	06	001	0007	68101
9	06	001	0007	68102
10	06	001	0007	68103
11	06	001	0007	68104
12	06	001	0007	68105
13	06	001	0007	68106
14	06	001	0007	68107
15	06	001	0007	68108
16	06	001	0007	68109
17	06	001	0007	81102
18	06	001	0007	82203
19	06	001	0007	82301
20	06	001	0007	82306
21	06	001	0007	82403
22	06	001	0007	85101
23	06	001	0007	88101

All parms w/end date

	State Code	County Code	Site ID	Parm Code	Date Sampling Ended
1	06	001	0007	42101	
2	06	001	0007	42601	
3	06	001	0007	42602	
4	06	001	0007	43101	
5	06	001	0007	43102	
6	06	001	0007	43201	
7	06	001	0007	44201	
8	06	001	0007	68101	
9	06	001	0007	68102	
10	06	001	0007	68103	
11	06	001	0007	68104	
12	06	001	0007	68105	
13	06	001	0007	68106	
14	06	001	0007	68107	
15	06	001	0007	68108	
16	06	001	0007	68109	
17	06	001	0007	81102	31-MAY-2000
18	06	001	0007	81102	
19	06	001	0007	82203	
20	06	001	0007	82301	
21	06	001	0007	82306	
22	06	001	0007	82403	
23	06	001	0007	85101	
24	06	001	0007	88101	



Exercise 3

1. List all sites in your state that have been terminated. For each row, show the state code, county code, site ID, date site created and date site terminated.
2. Add a title.
3. Include a count of the number of sites that have been terminated for each county and a grand total at the bottom. (Hint: Use "Totals" under Tools menu or Σ .)



Exercise 3: Sample Results

File Edit Sheet Tools Graph Help

Terminated Sites in NC

	State Code	County Code	Site ID	Date Site Established	Date Site Terminated
1	37	001	0001	01-JAN-1971	31-DEC-2000
2			1001	01-JAN-1971	31-JUL-2002
3			Count: 2		
4		003	0001	01-JAN-1972	31-JUL-2002
5			Count: 1		
6		005	0001	01-JAN-1963	31-JUL-2002
7			Count: 1		
8		009	0001	01-JAN-1971	31-JUL-2002
9			Count: 1		
10		011	0001	20-APR-1998	31-JUL-2002
11			Count: 1		
12		013	0001	01-JAN-1971	31-JUL-2002
13			0002	01-JAN-1980	31-JUL-2002
14			0003	01-JAN-1983	31-JUL-2002
15			0004	01-SEP-1988	31-JUL-2002
16			0150	01-JAN-1980	31-JUL-2002
17			0151	01-JAN-1980	31-JUL-2002
18			1001	01-JAN-1971	31-JUL-2002
19			1002	01-JAN-1977	31-JUL-2002

Page 1 of 3 24 Rows per Page

Sheet 1



Other Views – Start with a table

PM 2.5 Monitors with Sampling Periods Beginning in 2006
As of 31-MAY-06

	State Abbr	State Code	County Code	Site ID	Parameter Code	POC	Date Sampling Began	Date Sampling Ended
1	AL	01	033	0044	88101	3	01-JAN-2006	
2							Count: 1	
3	AR	05	067	0001	88101	1	01-JAN-2006	
4							Count: 1	
5	CA	06	019	3002	88101	4	13-JAN-2006	
6			037	9034	88101	3	01-FEB-2006	
7							Count: 2	
8	CO	08	013	0003	88101	3	01-FEB-2006	
9							Count: 1	
10	IA	19	017	0011	88101	1	01-JAN-2006	
11			017	0011	88101	3	01-JAN-2006	01-JAN-2006
12							Count: 2	
13	IN	18	037	0004	88101	1	29-JAN-2006	
14			037	0005	88101	1	29-JAN-2006	
15							Count: 2	
16	KY	21	195	0002	88101	2	01-JAN-2006	
17			227	0007	88101	2	01-JAN-2006	
18							Count: 2	
19	MA	25	009	6001	88101	7	22-FEB-2006	

Page 1 of 3 24 Rows per Page

Table Crosstab and graph



From the table, create a Crosstab

PM 2.5 Monitors with Sampling Periods Beginning in 2006
As of 31-MAY-06

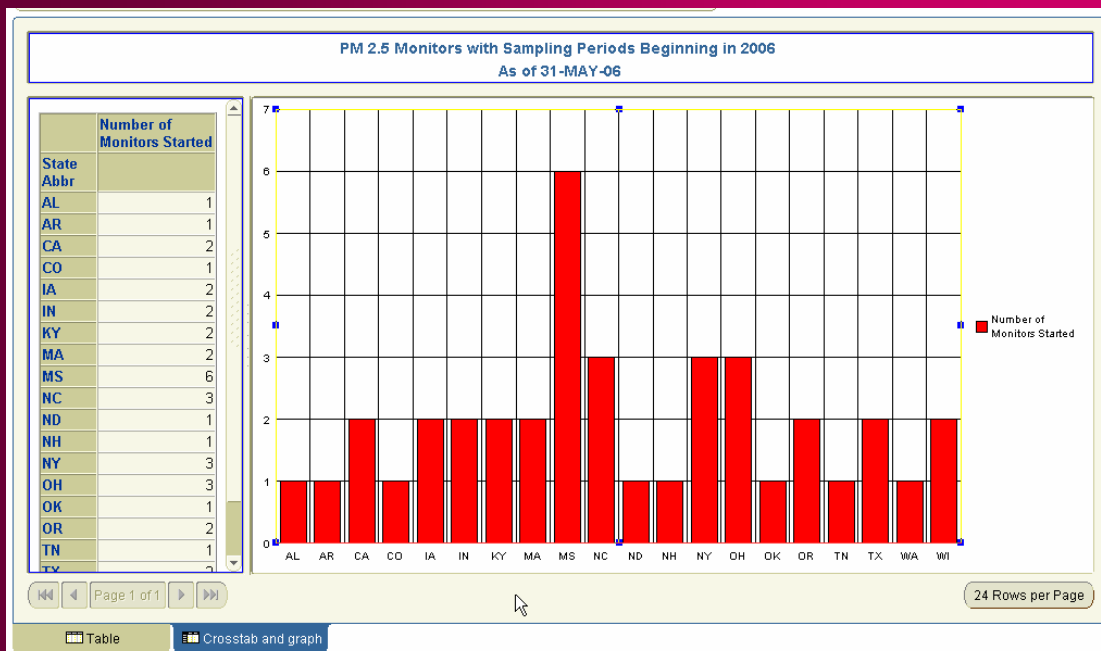
State Abbr	Number of Monitors Started
AL	1
AR	1
CA	2
CO	1
IA	2
IN	2
KY	2
MA	2
MS	6
NC	3
ND	1
NH	1
NY	3
OH	3
OK	1
OR	2
TN	1
TX	2
WA	1

Page 1 of 1 24 Rows per Page

Table Crosstab and graph



...add a graph



Output Options - Excel

Microsoft Excel - t5 - PM2.5 Monitors started in 2006 with crosstab and graph.xls

PM 2.5 Monitors with Sampling Periods Beginning in 2006 As of 31-MAY-06

	A	B	C	D	E	F	G	H
	State Abbr	State Code	County Code	Site ID	Parameter Code	POC	Date Sampling Began	Date Sampling Ended
1	AL	01	033	0044	88101	3	01-Jan-2006	
2							Count: 1	
3	AR	05	067	0001	88101	1	01-Jan-2006	
4							Count: 1	
5	CA	06	019	3002	88101	4	13-Jan-2006	
6			037	9034	88101	3	01-Feb-2006	
7							Count: 2	
8	CO	08	013	0003	88101	3	01-Feb-2006	
9							Count: 1	
10	IA	19	017	0011	88101	1	01-Jan-2006	
11			017	0011	88101	3	01-Jan-2006	01-Jan-2006
12							Count: 2	
13	IN	18	037	0004	88101	1	29-Jan-2006	
14			037	0005	88101	1	29-Jan-2006	
15							Count: 2	
16	KY	21	195	0002	88101	2	01-Jan-2006	
17			227	0007	88101	2	01-Jan-2006	
18							Count: 2	
19	MA	25	009	6001	88101	7	22-Feb-2006	
20			013	0008	88101	2	01-Jan-2006	
21							Count: 2	
22	MS	28	045	8108	88101	8	05-Apr-2006	
23			045	8108	88101	9	05-Apr-2006	
24			047	8106	88101	8	05-Apr-2006	
25			047	8106	88101	9	05-Apr-2006	
26			047	8107	88101	8	05-Apr-2006	
27			047	8107	88101	9	05-Apr-2006	
28							Count: 6	
29	NC	37	033	0001	88101	3	12-Jan-2006	
30			071	0016	88101	3	07-Feb-2006	
31			119	0043	88101	1	01-Jan-2006	
32							Count: 3	

Ready



Output Options - HTML

t5 - PM2.5 Monitors started in 2006 with crosstab and graph Table - Microsoft Internet Explorer

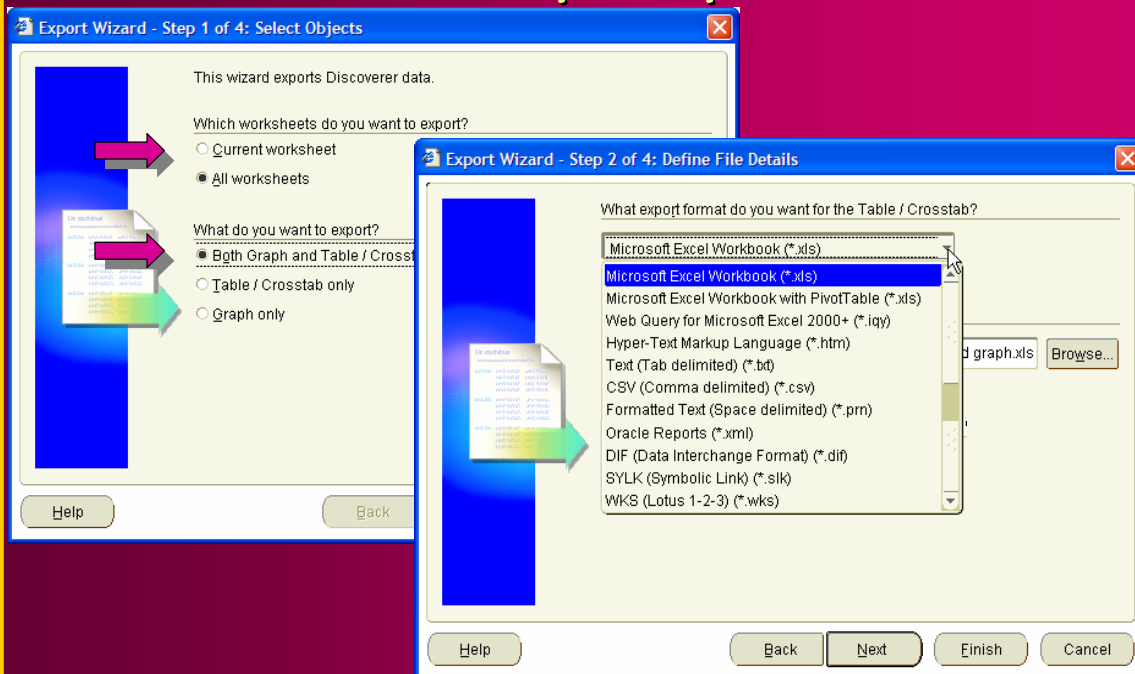
PM 2.5 Monitors with Sampling Periods Beginning in 2006 As of 31-MAY-06

	State Abbr	State Code	County Code	Site ID	Parameter Code	POC	Date Sampling Began	Date Sampling Ended
1	AL	01	033	0044	88101	3	01-JAN-2006	
2							Count: 1	
3	AR	05	067	0001	88101	1	01-JAN-2006	
4							Count: 1	
5	CA	06	019	3002	88101	4	13-JAN-2006	
6			037	9034	88101	3	01-FEB-2006	
7							Count: 2	
8	CO	08	013	0003	88101	3	01-FEB-2006	
9							Count: 1	
10	IA	19	017	0011	88101	1	01-JAN-2006	
11			017	0011	88101	3	01-JAN-2006	01-JAN-2006
12							Count: 2	
13	IN	18	037	0004	88101	1	29-JAN-2006	
14			037	0005	88101	1	29-JAN-2006	
15							Count: 2	
16	KY	21	195	0002	88101	2	01-JAN-2006	
17			227	0007	88101	2	01-JAN-2006	
18							Count: 2	
19	MA	25	009	6001	88101	7	22-FEB-2006	
20			013	0008	88101	2	01-JAN-2006	
21							Count: 2	
22	MS	28	045	8108	88101	8	05-APR-2006	
23			045	8108	88101	9	05-APR-2006	
24			047	8106	88101	8	05-APR-2006	
25			047	8106	88101	9	05-APR-2006	
26			047	8107	88101	8	05-APR-2006	

Done



Other Output Options



Using More Features

Goal:

1. Find all PM_{2.5} monitors with sampling periods beginning in 2005
2. Sort the results by state abbreviation, county, site, and POC
3. Display start date and end date (if any) for sampling periods
4. Display count of monitors in each state.
5. Add an appropriate title
6. Save the workbook on the database
7. Share your workbook with your neighbor



Desired Results

PM 2.5 Monitors with Sampling Periods Beginning in 2006 As of 31-MAY-06								
	State Abbr	State Code	County Code	Site ID	Parameter Code	POC	Date Sampling Began	Date Sampling Ended
1	AL	01	033	0044	88101	3	01-JAN-2006	
2							Count: 1	
3	AR	05	067	0001	88101	1	01-JAN-2006	
4							Count: 1	
5	CA	06	019	3002	88101	4	13-JAN-2006	
6			037	9034	88101	3	01-FEB-2006	
7							Count: 2	
8	CO	08	013	0003	88101	3	01-FEB-2006	
9							Count: 1	
10	IA	19	017	0011	88101	1	01-JAN-2006	
11			017	0011	88101	3	01-JAN-2006	01-JAN-2006
12							Count: 2	
13	IN	18	037	0004	88101	1	29-JAN-2006	
14			037	0005	88101	1	29-JAN-2006	
15							Count: 2	
16	KY	21	195	0002	88101	2	01-JAN-2006	
17			227	0007	88101	2	01-JAN-2006	
18							Count: 2	
19	MA	25	009	6001	88101	7	22-FEB-2006	

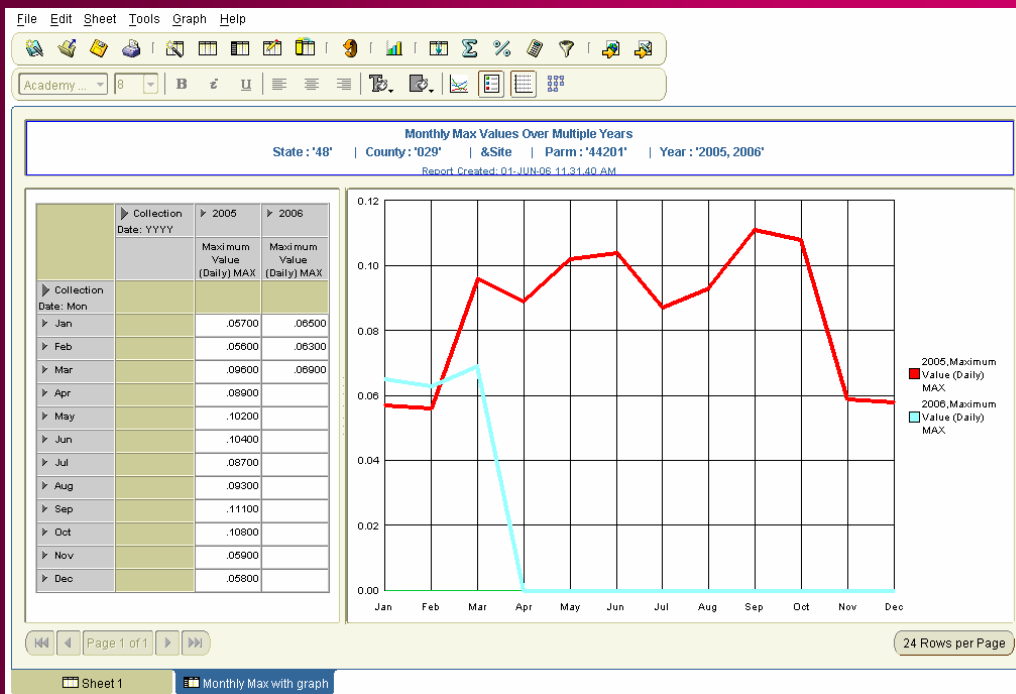
Page 1 of 3 24 Rows per Page



Live Demo



Monthly Max Values with Graph



Sample Monthly Max, Min, Mean by Monitor

File Edit Sheet Tools Graph Help

Monthly Max, Min and Arithmetic Mean Values

State : '48' | County : '029' | Parm : '44201' | Year : '2005, 2006'

Report Created: 01-JUN-06 03:06:46 PM

Monitor ID	Sample Date/Time: Mon	Standard Sample Value MAX		Standard Sample Value MIN		Standard Sample Value AVG		Number of Obs	
		2005	2006	2005	2006	2005	2006	2005	2006
48-029-0032-44201-2		.10800	.06900	.00200	.00200	.02758	.02617	8655	2144
	Jan	.04800	.05700	.00200	.00200	.01662	.02412	736	739
	Feb	.05100	.05800	.00200	.00200	.01753	.02278	667	667
	Mar	.08400	.06900	.00200	.00200	.03261	.03129	735	738
	Apr	.08100		.00200		.04238		696	
	May	.09400		.00200		.03850		739	
	Jun	.09200		.00200		.03160		714	
	Jul	.07600		.00200		.02444		732	
	Aug	.08300		.00200		.02642		737	
	Sep	.10600		.00200		.03157		712	
	Oct	.10800		.00200		.02968		736	
	Nov	.05100		.00200		.01989		714	
Dec	.05100		.00200		.01956		737		
48-029-0052-44201-1		.11100	.06500	.00200	.00200	.02790	.02669	8540	2144
	Jan	.05000	.05800	.00200	.00200	.01882	.02576	734	739
	Feb	.05600	.05900	.00200	.00200	.01940	.02399	666	667

Page 1 of 2




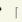


















24 Rows per Page

Sheet 1 Monthly Max, Min, Avg



Sample Quarterly Max, Min, Mean

File Edit Sheet Tools Graph Help



Quarterly Max, Min and Arithmetic Mean Values

State : '48' | County : '029' | Parm : '44201' | Year : '2005, 2006'

Report Created: 01-JUN-06 03:31:15 PM

Srng Grp	Monitor ID	2005												2006				
		Q1				Q2				Q3				Q4				
		Std Sample Value MAX	Std Sample Value MIN	Std Sample Value AVG	Number of Obs	Std Sample Value MAX	Std Sample Value MIN	Std Sample Value AVG	Number of Obs	Std Sample Value MAX	Std Sample Value MIN	Std Sample Value AVG	Number of Obs	Std Sample Value MAX	Std Sample Value MIN	Std Sample Value AVG	Number of Obs	
TEXAS		.09600	.00200	.02473	6402	.10400	.00200	.03716	6367	.11100	.00200	.02768	6440	.10800	.00200	.02572	6563	.06900
	48-029-0032-44201-2	.08400	.00200	.02240	2138	.09400	.00200	.03746	2140	.10600	.00200	.02744	2181	.10800	.00200	.02307	2187	.06900
	48-029-0052-44201-1	.09600	.00200	.02413	2127	.10400	.00200	.03693	2061	.11100	.00200	.02692	2164	.10700	.00200	.02403	2188	.06500
	48-029-0059-44201-1	.06900	.00200	.02766	2137	.08900	.00200	.03708	2157	.08600	.00200	.02871	2095	.09600	.00200	.03007	2188	.06700

Page 1 of 1

24 Rows per Page






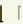











☒ Qtrly Max, Min, Avg by Monitor ID

☐ Qtrly Max, Min, Avg by Monitor ID 2



Sample Quarterly Max, Min, Mean

File Edit Sheet Tools Graph Help



Quarterly Max, Min and Arithmetic Mean Values

State : '48' | County : '029' | Parm : '44201' | Year : '2005, 2006'


Report Created: 01-JUN-06 03:28:42 PM


Page Items: State Code: 48 Parameter Code: 44201 County Code: 029

Scrng Grp	Yr	Q	Std Sample Value MAX			Std Sample Value MIN			Std Sample Value AVG			Number of Obs				
			Site ID	0032	0052	0059	0032	0052	0059	0032	0052	0059	0032	0052	0059	
			POC	2	1	1	2	1	1	2	1	1	2	1	1	
TEXAS	2005															
			.10800	.11100	.09600	.00200	.00200	.00200	.02730	.02765	.03121	10799	10684	10720		
			.10800	.11100	.09600	.00200	.00200	.00200	.02758	.02790	.03090	8655	8540	8577		
		Q1	.08400	.09600	.06900	.00200	.00200	.00200	.02240	.02413	.02766	2138	2127	2137		
	Q2	.09400	.10400	.08900	.00200	.00200	.00200	.03746	.03693	.03708	2149	2061	2157			
	Q3	.10600	.11100	.08600	.00200	.00200	.00200	.02744	.02692	.02871	2181	2164	2095			
	Q4	.10800	.10700	.09600	.00200	.00200	.00200	.02307	.02403	.03007	2187	2188	2188			
	2006		.06900	.06500	.06700	.00200	.00200	.00200	.02617	.02669	.03242	2144	2144	2143		
	Q1	.06900	.06500	.06700	.00200	.00200	.00200	.02617	.02669	.03242	2144	2144	2143			

Page 1 of 1

24 Rows per Page

 Qtrly Max, Min, Avg by Monitor ID

 Qtrly Max, Min, Avg by Monitor ID 2



Sample Quarterly Completeness Report

File Edit Sheet Tools Graph Help

Quarterly Completeness Report
Summary Year(s): '2005' | State(s): '48' | Parameter(s): '44201'
Exceptional Data Tmes: 0.5

Page Items: Summary Year (Quarterly): 2005 Parameter Desc: Ozone State Abbr: TX State Code: 48 Duration Code: 1

County	Site ID	Site Address	Supporting Agency	POC	1Q 2005					2Q 2005					3Q 2005					4Q 2005				
					Arith Mean	Crit of Obs	% of Obs	Sum Crit Ind	Excp Data Type	Arith Mean	Crit of Obs	% of Obs	Sum Crit Ind	Excp Data Type	Arith Mean	Crit of Obs	% of Obs	Sum Crit Ind	Excp Data Type	Arith Mean	Crit of Obs	% of Obs	Sum Crit Ind	Excp Data Type
029 Bexar	0032	8655 BLUEBIRD LANE, San Antonio	1035 - Texas Commission On Environmental Quality	2	0.02	2138	99	Y	0	0.04	2149	98	Y	0	0.03	2181	100	Y	0	0.02	2187	100	Y	0
	0052	F RANGE, 1000YD MARKER OFF WILDERNESS TR, San Antonio	1035 - Texas Commission On Environmental Quality	1	0.02	2127	99	Y	0	0.04	2061	95	Y	0	0.03	2164	98	Y	0	0.02	2188	100	Y	0
	0059	14620 LAGUNA RD., San Antonio	1035 - Texas Commission On Environmental Quality	1	0.03	2137	100	Y	0	0.04	2157	100	Y	0	0.03	2095	96	Y	0	0.03	2188	100	Y	0
039 Brazoria	1004	4503 CROIX PKWY, Manvel	1035 - Texas Commission On Environmental Quality	1	0.02	2138	100	Y	0	0.03	2121	97	Y	0	0.02	2028	92	Y	0	0.02	2175	99	Y	0
	1016	109 A BRAZORIA HWY 332 WEST, Lake Jackson	1035 - Texas Commission On Environmental Quality	1	0.03	2107	94	Y	0	0.03	2087	96	Y	0	0.02	1958	89	Y	0	0.03	2083	95	Y	0
043 Brevster	0101	BIG BEND NATIONAL PARK, TEXAS, Big Bend National Park	0745 - National Park Service	1	0.04	1787	88	Y	0	0.05	1975	95	Y	0	0.04	2035	98	Y	0	0.04	1936	93	Y	0

Page 1 of 3 24 Rows per Page

Sheet 1 Qrtly Completeness Crosstab



Hints and Tips and Other Good Stuff

- ❖ AQSprod is the database instance name
- ❖ Discoverer is accessing the live production database (AQSprod – same as the AQS application)
- ❖ Your Discoverer userid and password are the same as your AQS application userid and password
- ❖ Only registered AQS users can access AQSprod via Discoverer
- ❖ If you delete your cookies, you'll have to recreate your connection
- ❖ Your Connection must be created on each different PC you use
- ❖ There is one EVL for AQS, with multiple Business Areas
- AQS basic has the most commonly used tables
- AQSprod 9i includes all the tables in AQS basic plus raw data – current and a few other related tables
- ❖ Online Help is pretty good!
- ❖ Any workbook you share with others will have your userid appended to the beginning of the workbook name
- ❖ You can get to Discoverer from the AQS Web Application link on the sidebar of the EPA TTN AQS page – <http://www.epa.gov/ttn/airs/airsaqs/>
- ❖ You can find answers to some of the Frequently Asked Questions from a link on that same page
- ❖ Many of the reference tables are viewable from <http://www.epa.gov/ttn/airs/airsaqs/manuals/codedescs.htm>



Hints and Tips and Other Good Stuff, cont'd

- ◊ Max time for Discoverer queries = 60 mins
- ◊ Max number of rows= 200,000
- ◊ Many of the date fields are defined as YYYYMonDD HH:MM – e.g., 2005Jun11 01:22
- ◊ Many date fields are also defined for just the YYYY, or Q, Mon, or DD, or HH, or MM
- ◊ If you can't get a total to work within Discoverer, you may want to export to a spreadsheet to create your totals (and other calculations)
- ◊ Java is secure with the Verisign Security Certificate updated annually
- ◊ Your browser must allow downloads of signed Active X controls to install the JInitiator (Java Initiator) from Oracle – either by identifying Oracle as a trusted site or prompting. As of 6/11/05, we're using version 1.3.1.18 of the JInitiator (Use Windows Control Panel to see JInitiator Control Panel)
- ◊ You can change the default directory for exported worksheets (FAQ)
- ◊ Set your defaults to show your conditions and date/time in the title
- ◊ Oracle Technology Network is a good source for information – free registration – look for Discoverer with Data Warehousing and Business Intelligence (<http://www.oracle.com/technology/products/discoverer/index.html>)
- ◊ The next version will always be better . . . Or not.



There's lots to do --
Discover the data
with *DISCOVERER!*

